

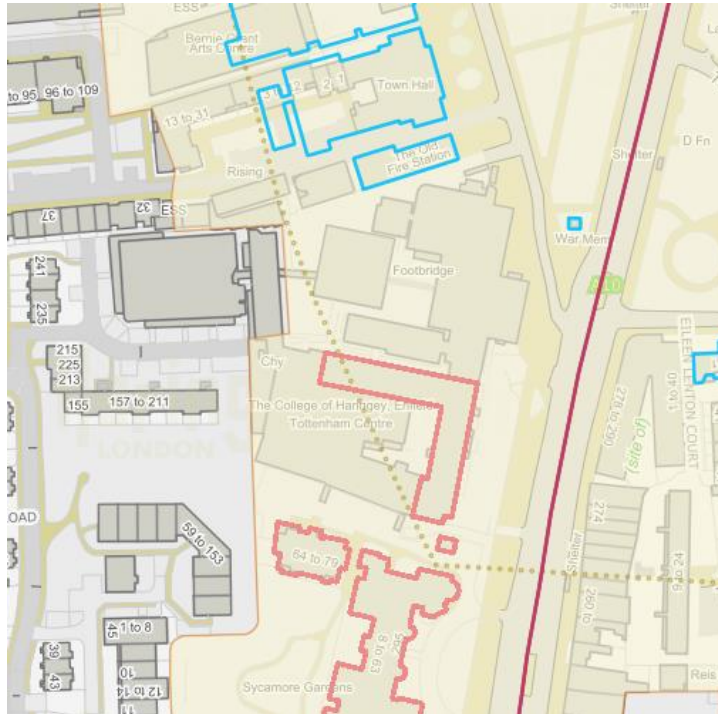
## Appendix 2: Images of the site and proposed scheme

Satellite birds eye image showing the site edged in red, with applicant ownership edged in blue.





## Existing condition of the site



Yellow: Conservation area boundary  
Blue: Listed building  
Red: Locally listed building



Aerial view of College campus from south of the site.



Aerial view of the college campus from the south-west of the site.





Aerial view of the college campus from the north of the site.

## Proposed site plan



## Proposed ground floor plan



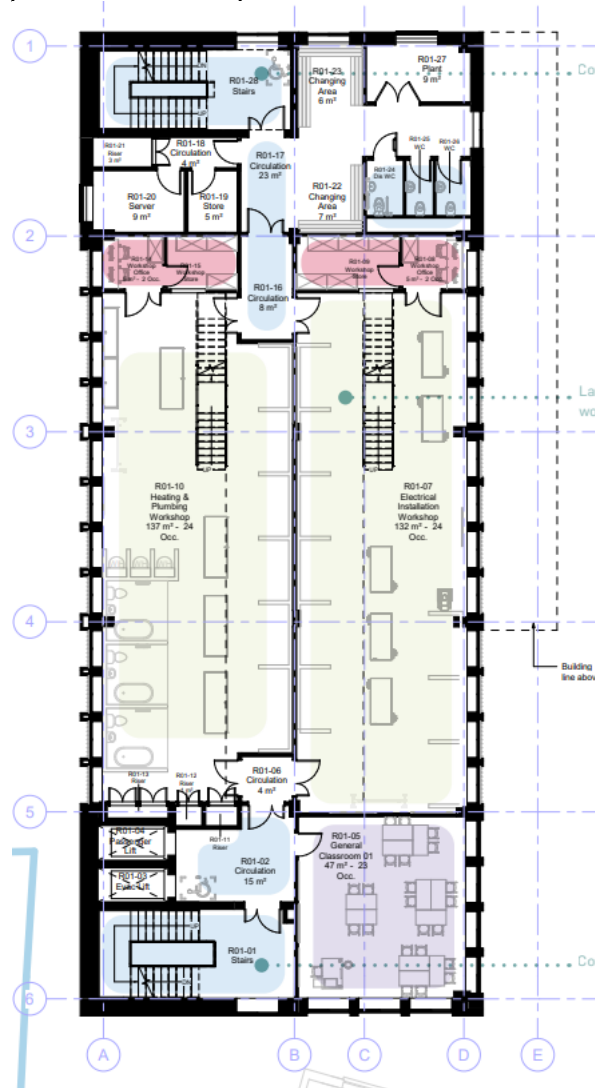
### Accommodation Overview

This building has two stair cores with toilet provision on every floor. The 2 largest workshops are located on this level with associated technicians' rooms and storage.

#### Key spaces:

- Double height Brick laying workshop
- Double height Engineering workshop

Proposed first floor plan



## Accommodation Overview

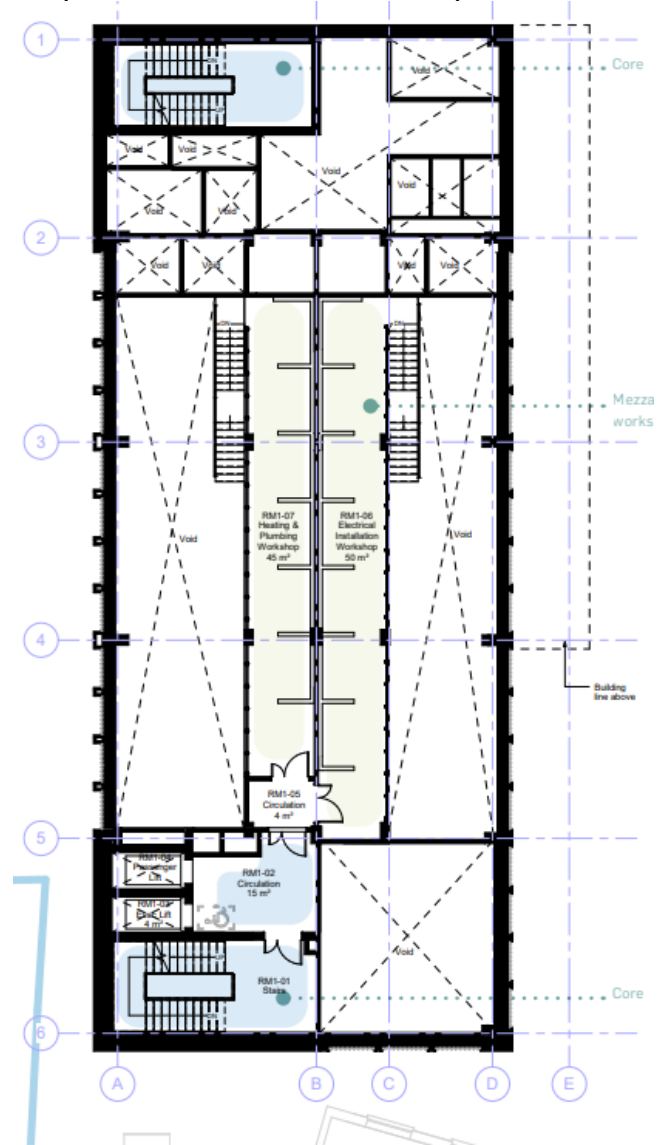
This floor has two large workshops with mezzanine levels, that accommodate specialist bays for students to do independent working. Changing facilities and a general classroom are also located on this level.

### Key spaces

- Heating and Plumbing workshop
- Electrical Installation workshop



## Proposed first floor mezzanine plan



### Accommodation Overview

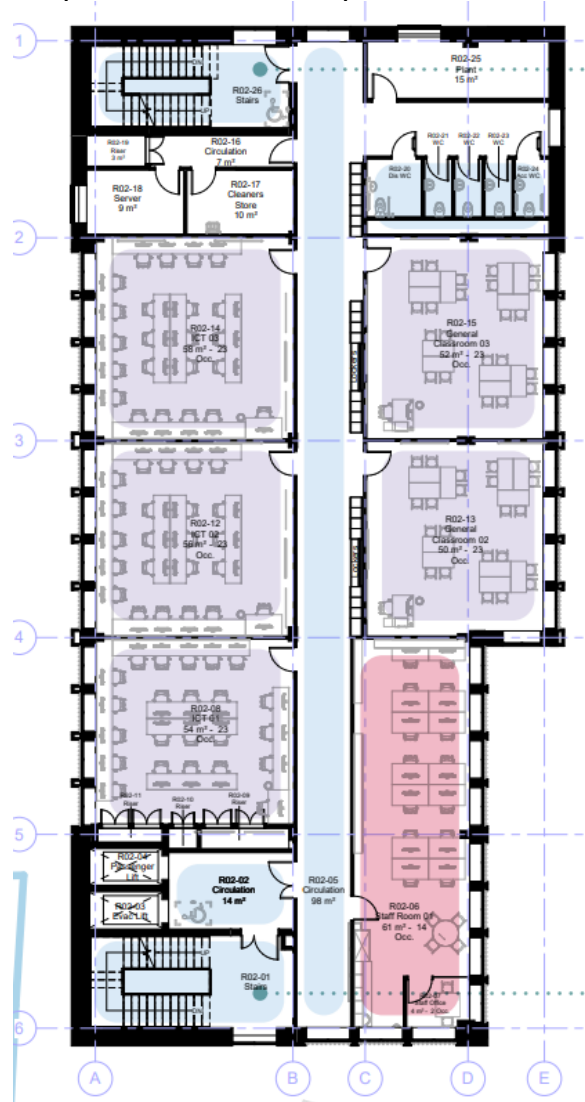
This floor accommodates the upper tier of study bays for students carrying out independent working. This stacked configuration allows staff to monitor students effectively.

#### Key spaces:

- Heating and Plumbing bays
- Electrical Installation bays



## Proposed second floor plan



### Accommodation Overview

This level accommodates several teaching classrooms, lockers for the students using the workshops and specialist labs plus an office for faculty members.

#### Key spaces:

- 5 x ICT/ General Classrooms
- Staff Room/ Office

**R03-06 Level**

**Rooms and Areas:**

- R03-01 Stairs
- R03-02 Circulation 14 m<sup>2</sup>
- R03-03 Post-grad Lab
- R03-04 Post-grad Lab
- R03-05 Project Based Learning Space 36 m<sup>2</sup> - 40 Occ.
- R03-07 Engineering & Technology Labs 01 37 m<sup>2</sup> - 20 Occ.
- R03-08 Stairs
- R03-09 Stairs
- R03-10 General Classroom 04 50 m<sup>2</sup> - 23 Occ.
- R03-11 Technician Room 25 m<sup>2</sup> - 2 Occ.
- R03-12 Engineering & Technology Labs 02 34 m<sup>2</sup> - 28 Occ.
- R03-13 ICT 04 52 m<sup>2</sup> - 23 Occ.
- R03-14 Circulation 7 m<sup>2</sup>
- R03-15 Cleaners Store 10 m<sup>2</sup>
- R03-16 Server 9 m<sup>2</sup>
- R03-17 Stairs
- R03-18 On WC
- R03-19 WC
- R03-20 WC
- R03-21 WC
- R03-22 On WC
- R03-23 Plant 15 m<sup>2</sup>

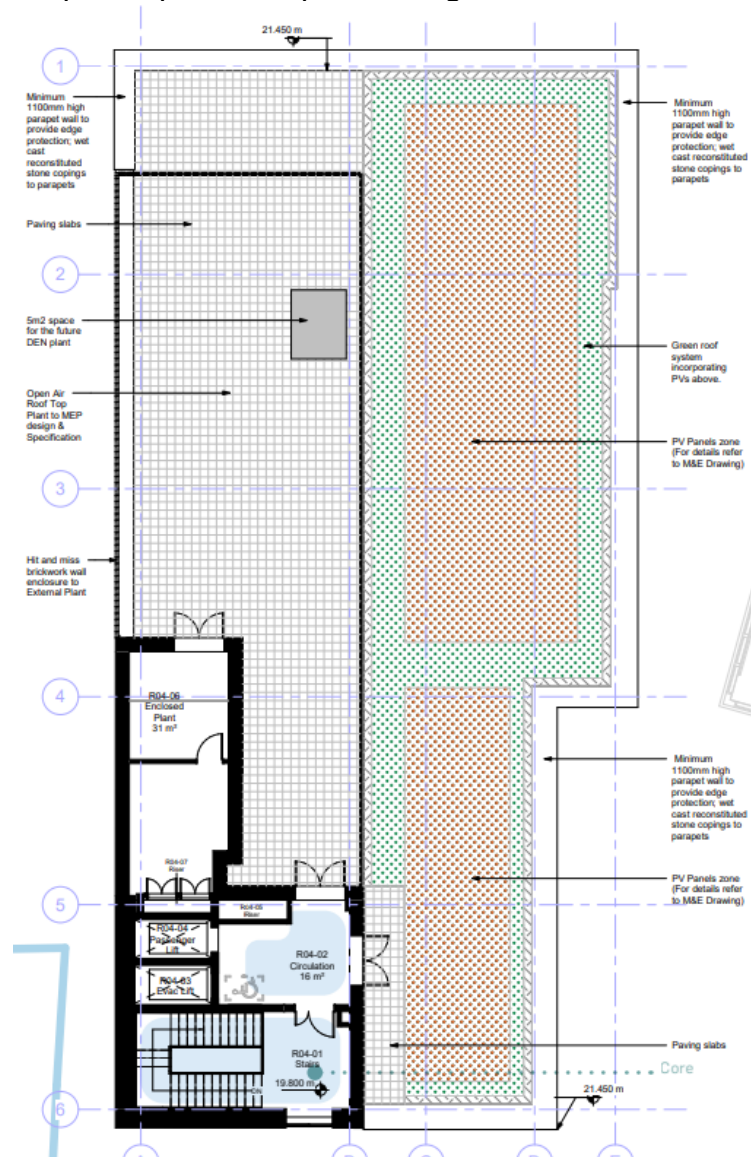
**Central Corridor:** R03-06 Circulation 73 m<sup>2</sup>

This level accommodates several teaching facilities with technical/ staff support.

- 2 x Specialist Engineering and Technology labs
- 2 x ICT/ General Classrooms
- Project Based Learning space



## Proposed plant/roof plan, with green roof and solar PV panels above



## Design Inspiration images



Photovoltaic Panels incorporated into a green roof

Illustrative masterplan layout of site, with centenary square and main courtyard landscaping





Proposed site elevation/sections



2 East Site Section



1 West Site Section



1 South Site Section



2 North Site Section